



European Radon Solutions Database

Prepared by
: ERRICCA 2 *European Radon Research and Industry Collaboration Concerted Action*
European Commission Contract N°: FIRI-CT-2001-20142

Existing Buildings

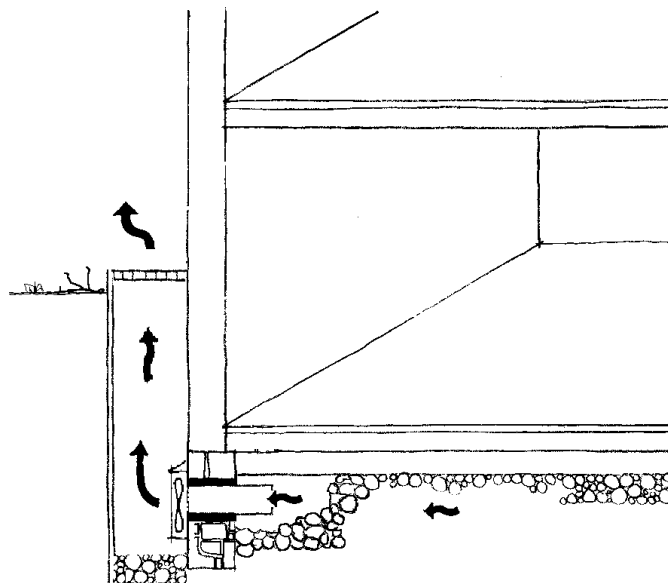
Case Study

Sheet N°

Type | Wall radon sump

Country | Switzerland

Illustration



Description

The soil air is extracted under the floor. The pipe entry must be fitted tightly. According to the properties of the soil and the size of the building, one extract point may be enough, or several may have to be installed. Otherwise, the exhaust vent should be sheltered (snow, rain) and be at least 2 metres away from windows and doors.

Selection

For all floor types configurations, except: natural soils

Pre-installation Diagnosis

None try it!

Radon reduction achieved

Radon reduction from 900 Bq/m³ down to 90 Bq/m³

Problems

The exhaust should be at least 2 metres away from windows and doors, so that the severely contaminated air does not re-infiltrate the interior.

Sealing: It's very important to seal around the pipe to prevent air leakage.

System enhancements

The largest possible cavity is created around the pipe, by hand or using a vacuum cleaner.

Further Information

More information about this system in the "Swiss Radon Guide" could be bought or downloaded from our website WWW.CH-RADON.CH

www.bag.admin.ch/strahlen/ionisant/radon/pdf/d/Radonhandbuch-en.pdf

or direct from

Swiss Federal Office of Public Health

Division of Radiation protection

Radon Technical and Information Centre

Roserens Georges-André

CH-3003 BERN

E-Mail: georges.roserens@bag.admin.ch

FAX: ++41 (0)31 322 83 83

Date Prepared : July 2003